

Rinnai

950 Gas Fire



Spread the warmth and comfort with a 950 Gas Fire.



950 Gas Fire

The 950 represents a new generation of gas fires for Rinnai. Designed to meet the highest expectations in terms of simple installation, powerful heat output, energy efficiency and flueing flexibility, the 950 is the future of fire.

This gas fire offers a mix of modern frames and burn media options, giving you the ultimate flexibility to create a space that is your own. The classic 'cut wood' look of the Australian Eucalyptus Log Set provides a beautiful dancing flame, whilst the glowing Pebbles radiate warmth with a modern twist.

Features

- Incredibly energy efficient with a top-of-the-range 5 star rating.
- Powerful heating performance over 8kW, perfect for open plan living.
- Modern or classic? Select either pebbles or logs to suit your style.
- Stainless steel or black? Select a fascia option to match your tastes.
- Safety mesh guard to give peace of mind and eliminate reflections.
- Easy to use remote, with room temperature display and flame control
- Flexible flueing options.



Stainless Steel on Black with Pebbles



Black on Black with Australian eucalyptus Logs



Pebbles



Australian eucalyptus Logs



Ember Control

5 STAR

GAS ENERGY RATING

USE THIS LABEL TO COMPARE
DIFFERENT MODEL CENTRAL HEATERS



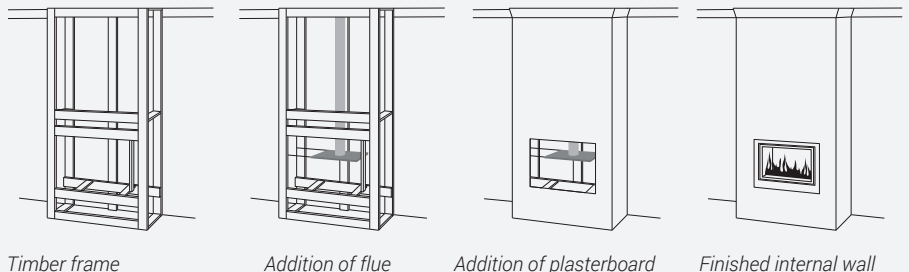
The Australian
Gas Association

Installation Options

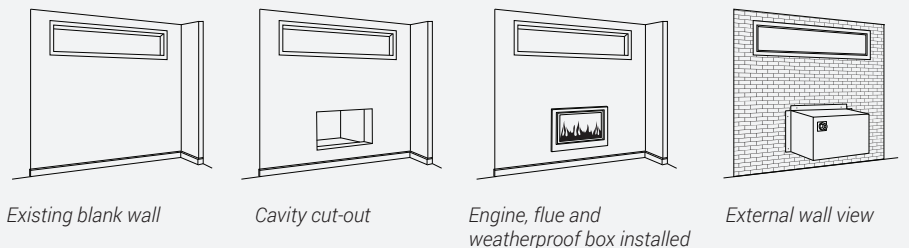
Whether you are building a new home, working through a major renovation or just want to revamp your living room, the Rinnai zero clearance option is the perfect solution to creating a new space.

If your home doesn't have an existing fireplace, creating a false fireplace is the next best thing. To ensure an easy installation into a timber frame or other combustible materials, the Rinnai 950 is designed with an integrated zero clearance box.

Creating a False Fireplace

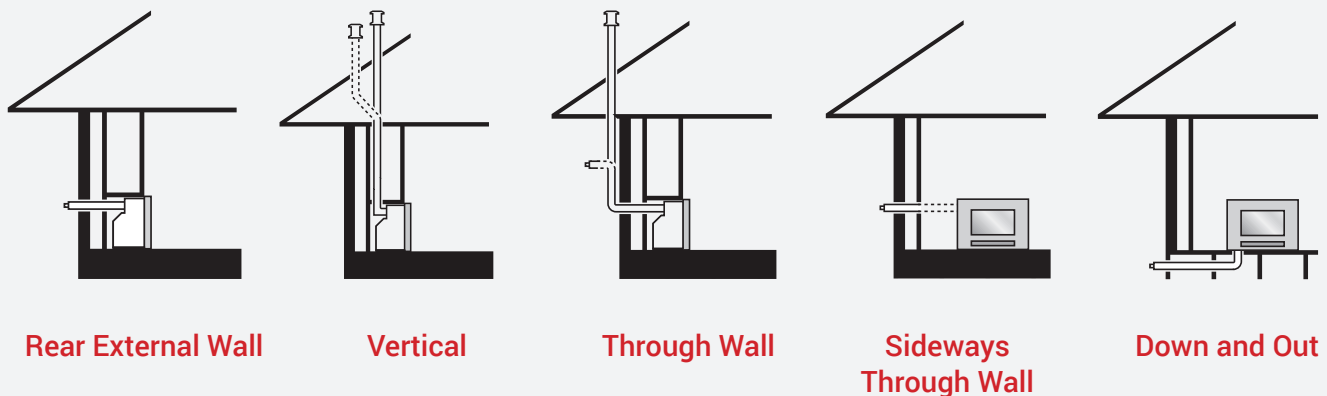


Weatherproof Box



For an alternative installation to a false fireplace, the Rinnai 950 can be installed into a weatherproof box. A cavity is cut into the existing blank wall and the fireplace is installed onto a bracket that allows the back of the fire to sit outside housed in a tightly sealed box. This option allows the fire to be built into an existing wall without taking up any extra space in the room. The weatherproof box is sold separately.

Flueing Options



Please note: *Suitable for direct, vertical or horizontal flueing. 500mm required for down and out applications. See installation instructions for full details..

Specifications*

	Visual Dimensions* (mm)			Inbuilt Cavity Dimensions (mm)			Efficiency Star Rating AS4553	Colour	Gas Input		kW Out-put	'Heats up to' Capacity (m2)			
	H	W	D	H	W	D			Low	High		Very Cold	Cold	Cool	Mild
950	620	1020	25	570	965	570	5.5*	Stainless Steel on black; Black on Black	10	34	8	69	82	110	125

Warranty

	Heat Exchanger	Fan	All Other Parts	Free Labour
Domestic Use	10 years pro rata ⁽¹⁾	2 years	1 year	1 year
Commercial Use	1 year on all parts and labour			

Please note: For full definitions of Domestic and Commercial use, along with other conditions and exclusions, please refer to www.rinnai.com.au (1) Full replacement cost in the 1st year, reducing 10% per year thereafter. 240V power is required on all models. A power cord and plug is fitted. If hardwiring is required, consult a licensed electrician. #Dimensions are subject to production tolerances and may vary slightly from those given. Rinnai Australia Pty Ltd reserves the right to make modifications and change specifications without notice. # Refers to the visual appearance of the appliance external to the wall for inbuilt models.

Refer to our online heater selector to find the right heater to suit your needs.
Download our "Rinnai Fire" app to visualise how a Rinnai Fireplace could look in your home.

Rinnai Australia Pty Ltd

ABN 74 005 138 769

100 Atlantic Drive,
Keysborough, Victoria 3173

For further information visit

www.rinnai.com.au

or call 1300 555 545

Rinnai

TOTAL HOME COMFORT



HOT WATER



HEATING



COOLING