



MACLAREN

atom™

OWNERS MANUAL 0 MONTHS

CONTENTS

- 1 Important Safety Information
- 2 Product Overview
- 3 Carton Contents
- 5 Use The Stroller Properly
- 9 Operation Instructions
- 25 Warnings
- 27 Care & Maintenance

IMPORTANT SAFETY REMINDER: PLEASE READ

If you have read and fully understood the instructions provided in the Owner's Manual and accompanying safety warnings you should now remove the red safety strap on your Stroller.

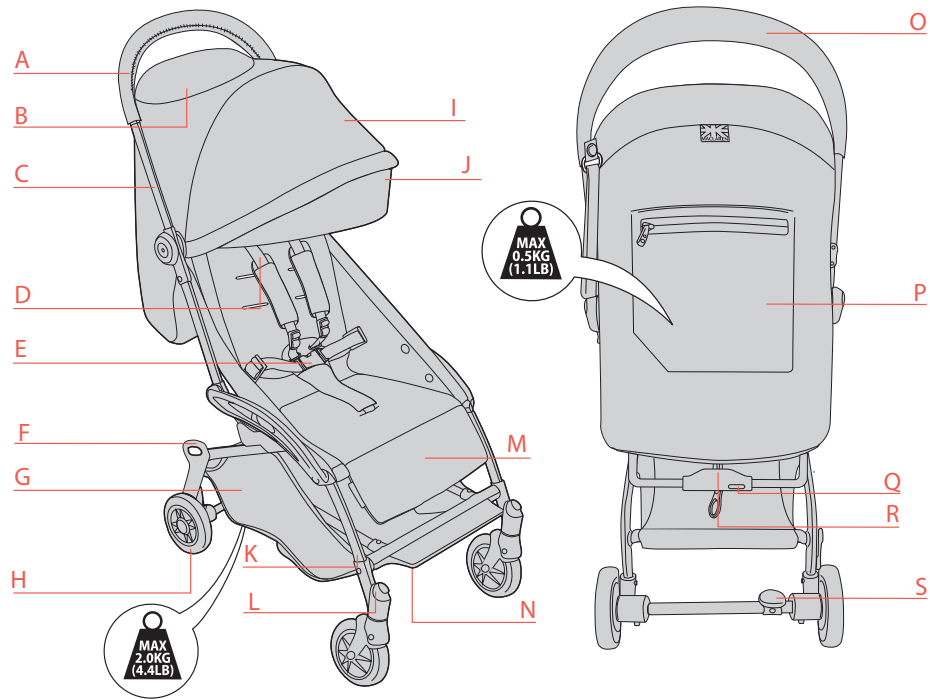
If you have not fully understood any aspect of the Owner's Manual and accompanying safety warnings, which have to be adhered to, you must not use this Stroller until you have sought clarification on any issues by either:

1. Contacting Maclaren customer services listed on the back of this booklet
2. Emailing a Maclaren representative at **info@maclarenbaby.com**
3. Logging on to **maclarenbaby.com** for more information and updates
4. Visit a Maclaren Showroom or authorised retailer for a demonstration on the safe use of your stroller. You can contact Maclaren Customer Services in order to arrange such a demonstration.

IMPORTANT: Please ensure that this Owner's Manual is kept for future reference and is passed on to anyone who is not familiar this product before they use this Stroller. Failure to do so may affect your Child's safety. Do not place your Child's safety at risk by not following the Owner's Manual and accompanying safety warnings.

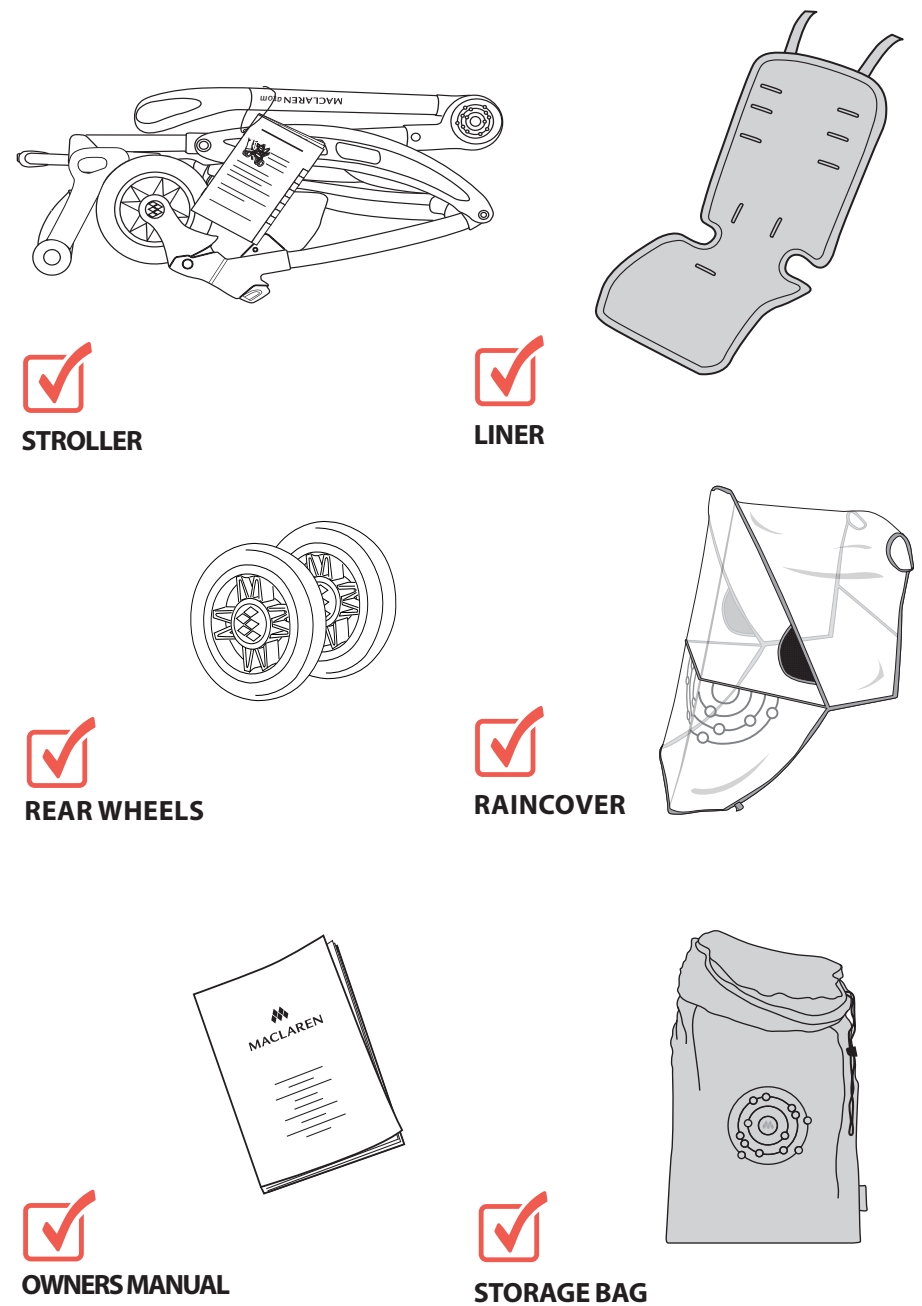
IMPORTANT: IF YOU ARE UNABLE TO UNDERSTAND OR USE THIS STROLLER IN ACCORDANCE WITH THE SAFETY OPERATION INSTRUCTIONS IN THE OWNER'S MANUAL PLEASE REFRAIN FROM USING THIS STROLLER AND RETURN THE PRODUCT TO STORE.

PRODUCT OVERVIEW



- | | | | | |
|---------------------|-----------------------------|----------------------------|----------------------------|----------------------------|
| A
Handle | B
Window | C
Stroller Model | D
Harness | E
Harness Buckle |
| F
Uplock | G
Shopping Basket | H
Tyre | I
Hood | J
Sun Visor |
| K
Chassis | L
Swivel Lock | M
Legrest | N
Footrest | O
Handle Cover |
| P
Pocket | Q
Primary Lock | R
Secondary Lock | S
Parking Device | |

CARTON CONTENTS



STROLLER

LINER

REAR WHEELS

RAINCOVER

OWNERS MANUAL

STORAGE BAG

Use the stroller properly



This symbol links the warnings with the illustrations as they must be studied together.

1 **OPENING BUGGY**
 OUVRIRE LA POUSETTE
 ABERTURA DE LA SILLA DE PASEO
 OFFNEN DES KINDERWAGENS
 APERTURA PASSEGGINO
 BUGGY OPENEN
 ÖPPNA LIPP BARNVAGNEN
 SÄDÄN KLAPPES KLAAPVOGNIEN UD
 OTWIERANIE WÓZKA
 ОТКРЫТИЕ КОЛЕСКИ
 ANOIFONTAZ TO KAPOITZAKI
 ASABANNI AGLIASHI
 ABERTURA DO CARRINHO
 MEMBUKA KERETA BAYI
 فتح العربيه
 打开婴儿车
 ストローラーを開く
 打开婴儿車

WARNING:

- ⊗ Never leave your child unattended.
- ⊗ Ensure that all the locking devices are engaged before use.
- ⊗ Read these instructions carefully before use and keep them for future reference.
- ⊗ Avoid injury ensure that your child is kept away from unfolding and opening devices.
- ⊗ Do not let your child play with this product.
- ⊗ This vehicle is intended for use by one child only.
- ⊗ Always use the restraint system.
- ⊗ Check that the pram body or seat unit or car seat attachment devices are correctly fitted and secured.
- ⊗ This product is not suitable for running or skating.
- ⊗ Avoid serious injury from falling or sliding out. Always use seat harness and footrest. Child may slip into leg openings and strangle. Never use in reclined car seat position unless head and foot barriers are securely attached.

WARNING: TO AVOID INJURY OR DEATH: FOLLOW THE MANUFACTURER'S INSTRUCTIONS.

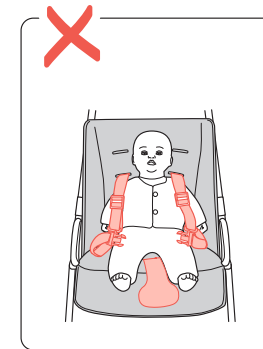
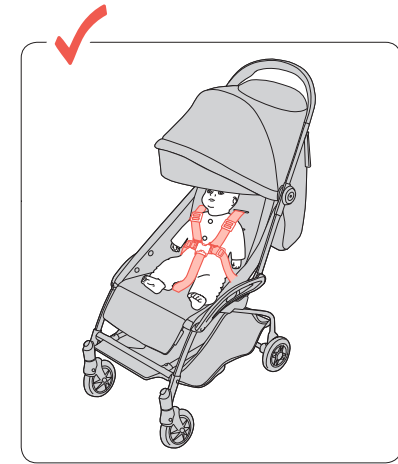
- ⊗ PUT ON ALL THE BRAKES WHENEVER YOU PARK THE STROLLER.
- ⊗ ALWAYS APPLY THE BRAKES WHENEVER THE STROLLER IS STATIONARY.
- ⊗ DO NOT LEAVE CHILDREN UNATTENDED.
- ⊗ DO NOT CARRY EXTRA CHILDREN OR BAGS ON THIS STROLLER.
- ⊗ MAKE SURE CHILDREN ARE CLEAR OF ANY MOVING PARTS IF YOU ADJUST THE STROLLER, OTHERWISE THEY MAY BE INJURED.
- ⊗ USE THIS HARNESS AT ALL TIMES.
- ⊗ WHEN NOT IN USE DISCONNECT SHOULDER STRAPS FROM THE WAIST STRAP AND / OR BUCKLE.
- ⊗ **IMPORTANT-DANGER:** It is important that great care is taken to ensure that children are kept well clear of the buggy when folding or unfolding the product. Finger traps and scissoring actions are unavoidable during these operations. When folding, take care not to trap the child's fingers and fold away all loose material.
- ⊗ It is important for your child's safety that the harness be correctly fitted and adjusted (especially after replacement for washing purposes). If not adjusted correctly in accordance with the instructions the safety of your child and stability of the buggy will be impaired.

IMPORTANT

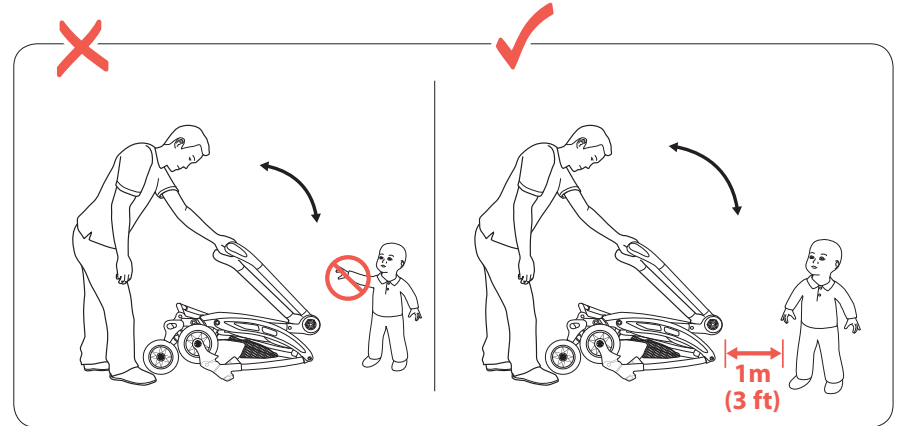
- This vehicle is intended for children from zero (0) months and up to a maximum weight of 15 kg.
- The parking device shall be engaged when placing and removing the children. Any load attached to the handle and/or on the back of the backrest and/or on the sides of the vehicle will affect the stability of the vehicle.
- CAUTION: Overloading the shopping basket may cause a hazardous unstable condition to exist. Maximum load 2 kg (4.4 lb) evenly distributed. Maximum carrying capacity of each hood pouch (where provided) is 1 kg (2.2 lb) but all goods must be placed in the hood pouch and contents of it. Do not carry additional goods on this buggy except for the manufacturer's instructions. Do not place items on the hood pouch.
- Accessories which are not recommended by the manufacturer/distributor shall not be used. Only accessories recommended by the manufacturer/distributor shall be used. Use of accessories not recommended by the manufacturer/distributor shall void the terms of our warranty.
- Always use the crotch strap in combination with the waist and shoulder straps correctly adjusted for your child. The harness and seat belt are not a substitute for proper adult supervision.
- This product is not intended for prolonged periods of sleeping. This vehicle does not replace a cot or a bed. Should your child need to sleep, then it should be placed in a suitable pram body, cot or bed.
- Follow all instructions carefully. Incorrect use will cause damage to the buggy.
- Maclaren recommends the most reclined position for new born babies.
- The stability of the buggy will be impaired in high winds with the rain cover fitted, and must be steered by a responsible adult at all times. Always use the tether strap, especially when on a slope. Rain cover must be removed when indoors and in hot weather to prevent overheating and possible risk of suffocation. Always dry rain cover thoroughly before storing. Do not leave the buggy exposed to heat e.g. by an open fire, exposed flame, radiator or in direct sunlight.
- Never leave child in the buggy when ascending or descending stairs or escalators or when travelling on other forms of transport.
- The buggy should always open and fold easily. Do not force it. It may be necessary to re-read the instructions.
- Negotiate curbs and rough ground carefully (always lock front wheels when used on rough ground). Repeated impact will cause damage to the buggy.
- Never allow children to stand on the footrest.

For ALUZ products only - Australian Safety Testing Standard AS/NZS 2088 with amendment to the Consumer Protection Notice No. 8 of 2007 - maximum weight of 20kg. This product has been designed and tested to the following safety standard at the maximum loading capacity: US Safety Testing Standard ASTM F833 - maximum weight of 23kg and 110cm tall. European Safety Testing Standard EN1888 and others - maximum weight of 15kg.

Maclaren reserves the right to make design changes to any of their products as part of their continuous development programme.

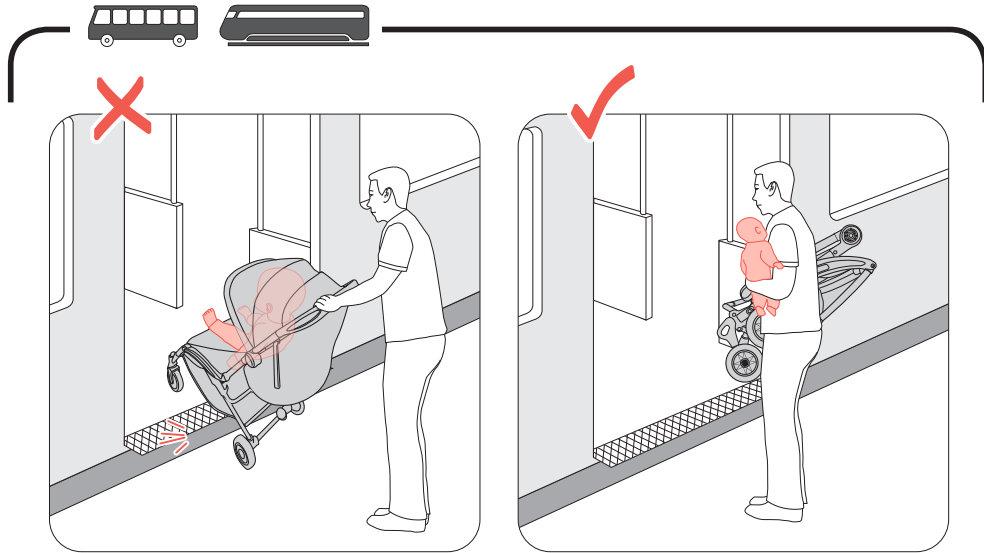


Use the stroller properly

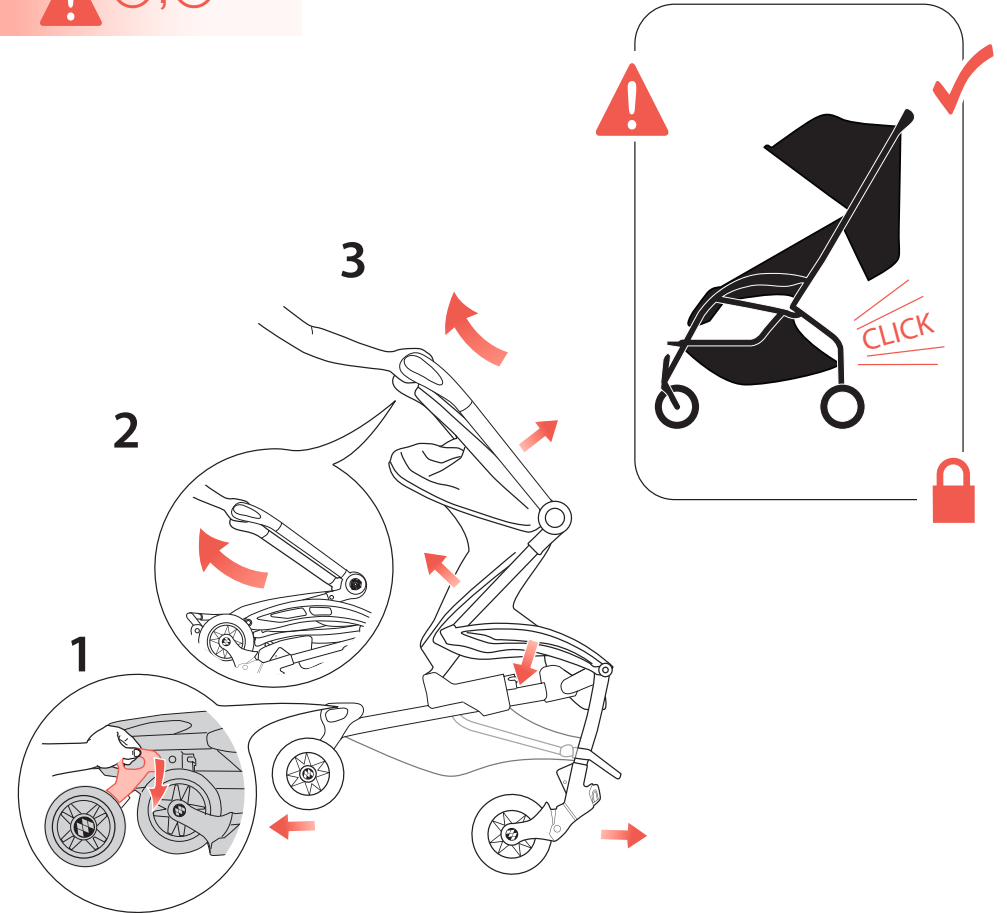


Use the stroller properly

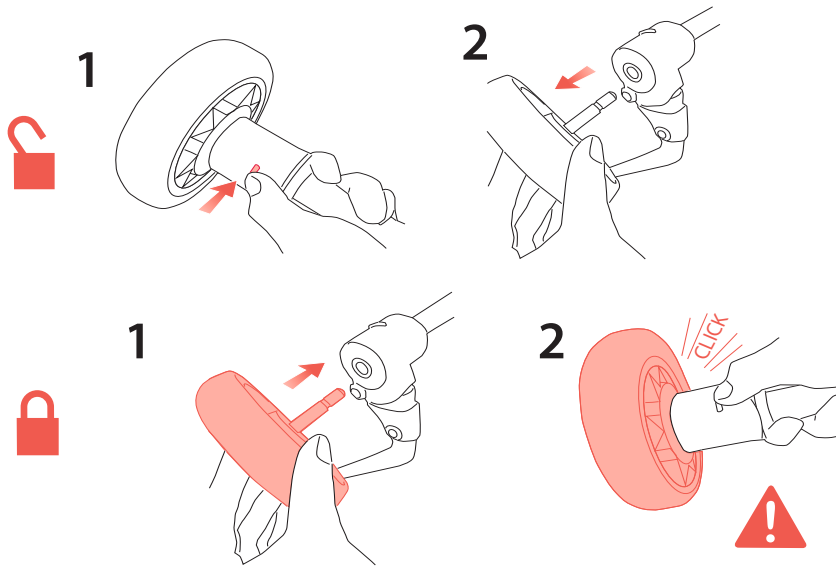
Use the stroller properly



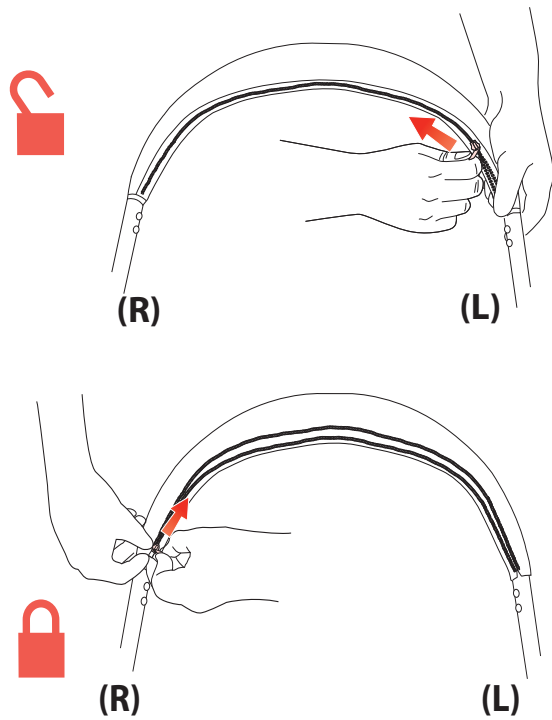
1 OPENING STROLLER



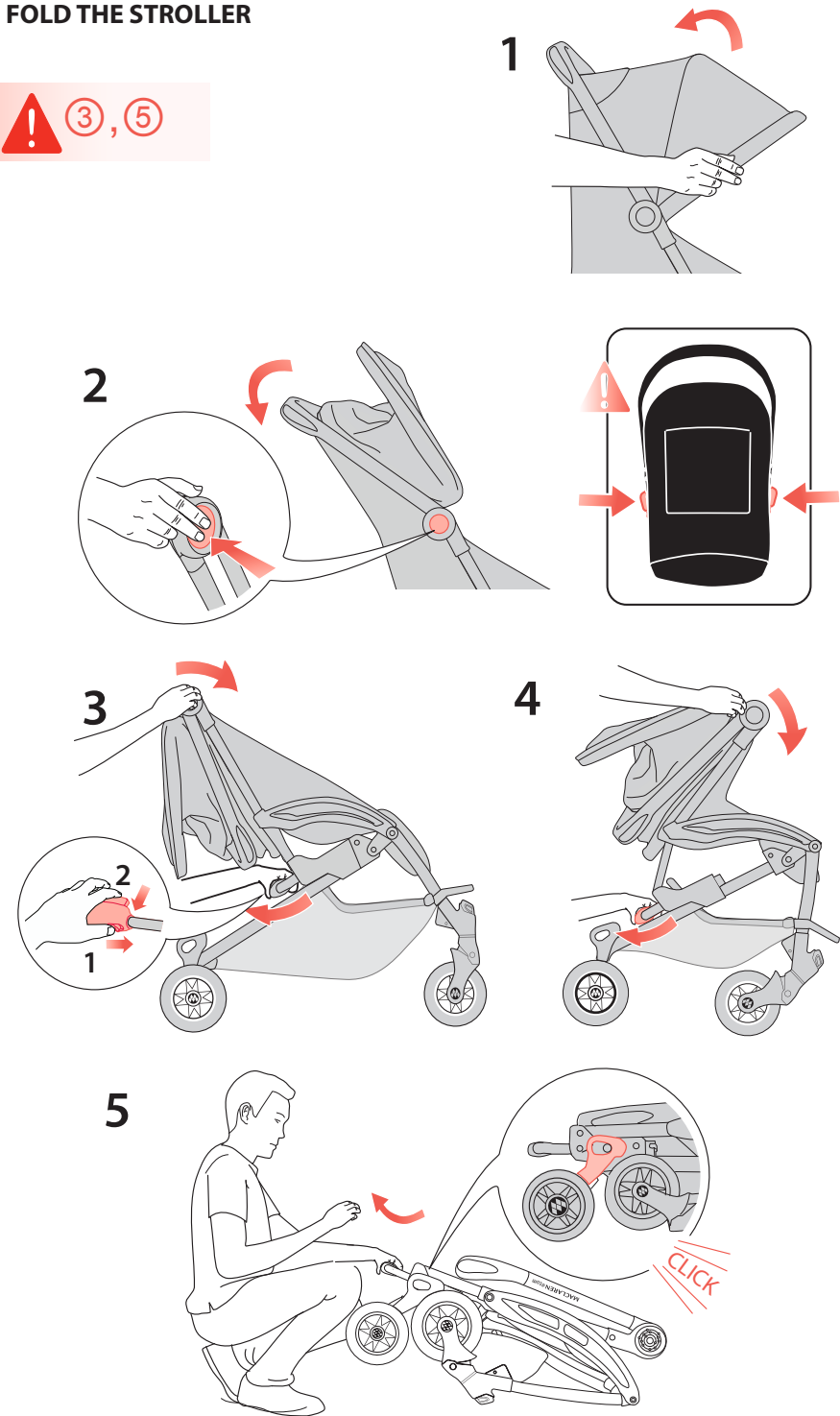
2 ATTACH AND RELEASE THE REAR WHEEL



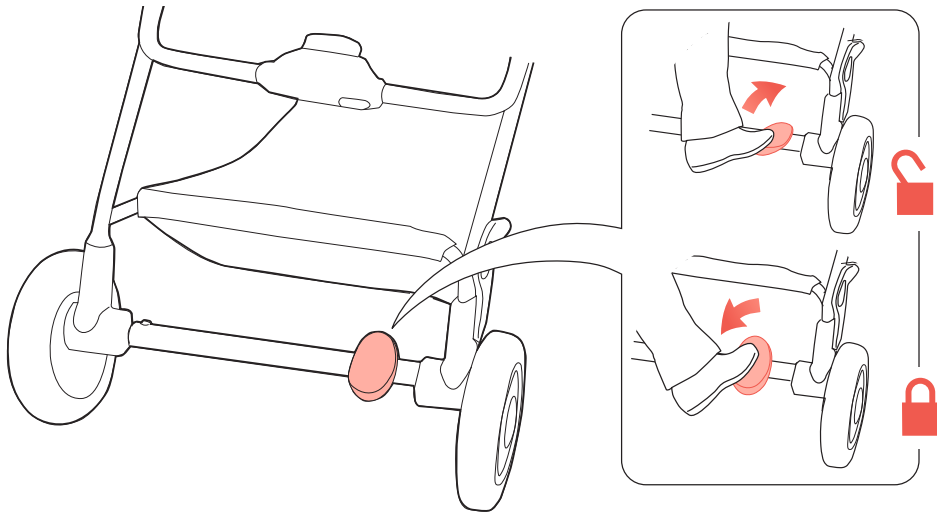
3 FITTING AND RELEASE HANDLE COVER



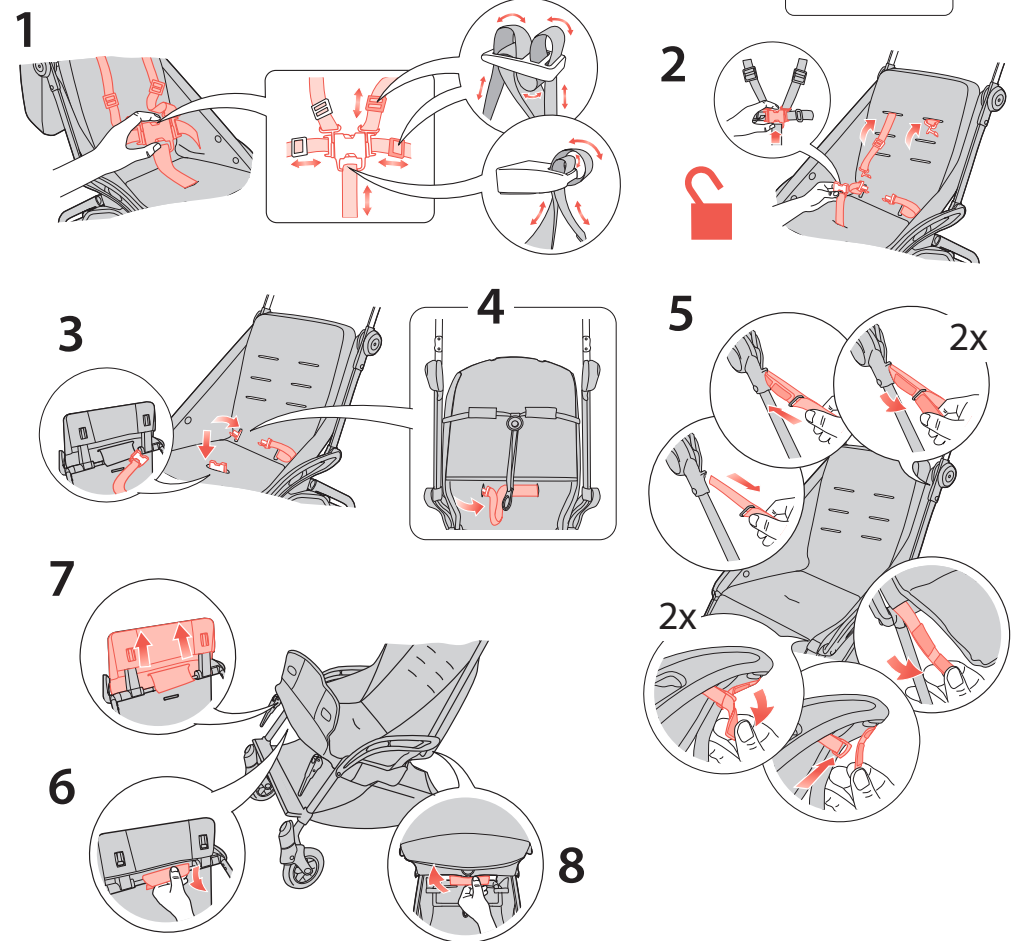
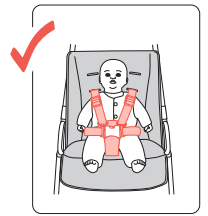
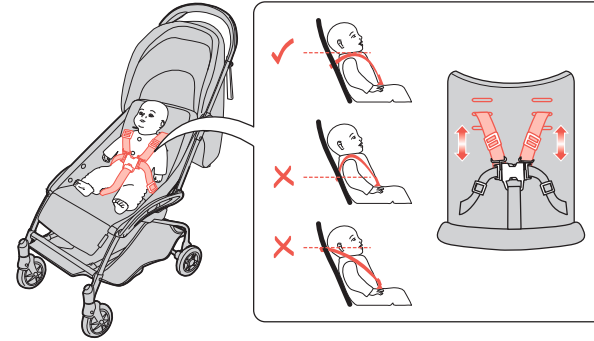
4 FOLD THE STROLLER

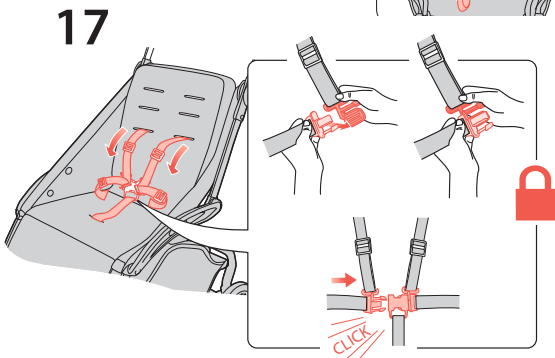
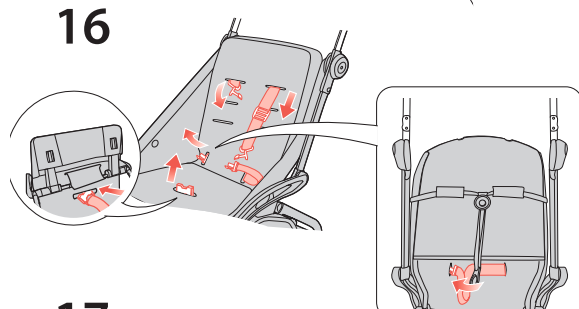
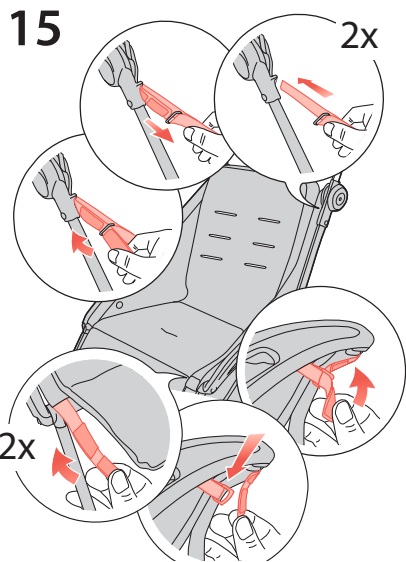
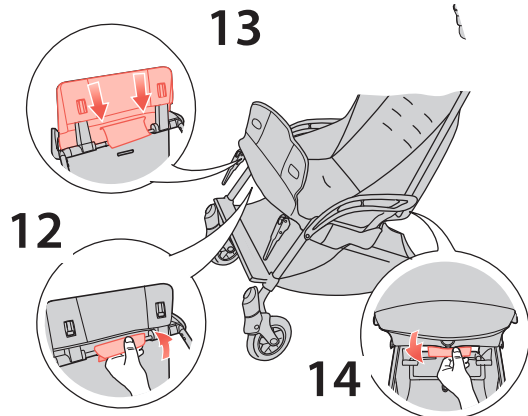
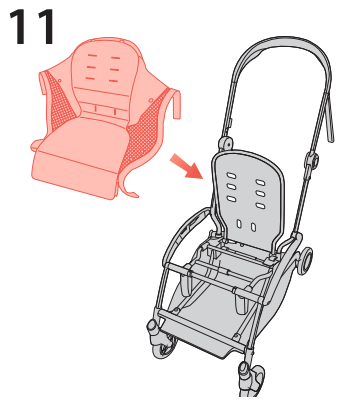
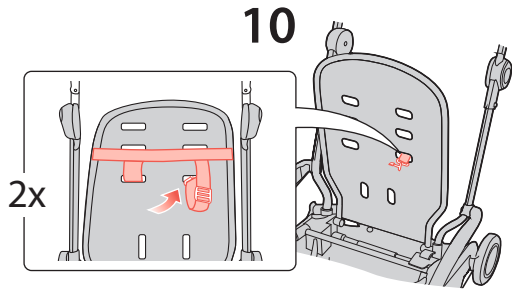
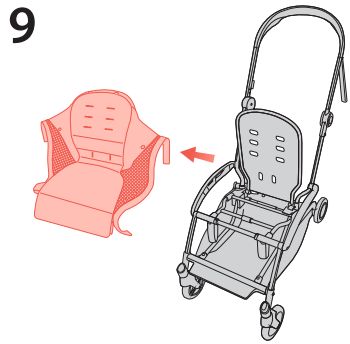


5 PARKING DEVICE OPERATION

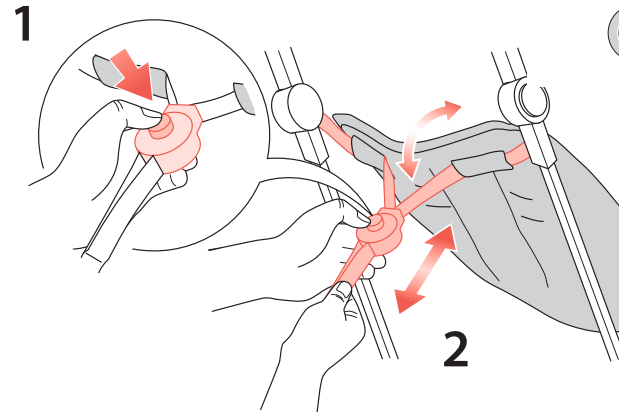
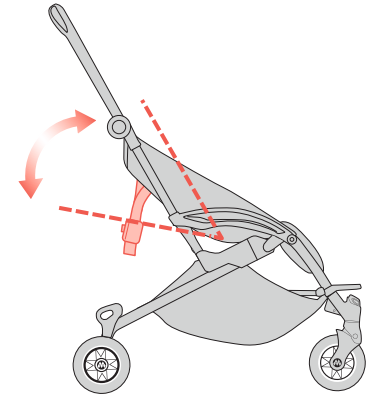


6 ADJUSTING THE SHOULDER HARNESS

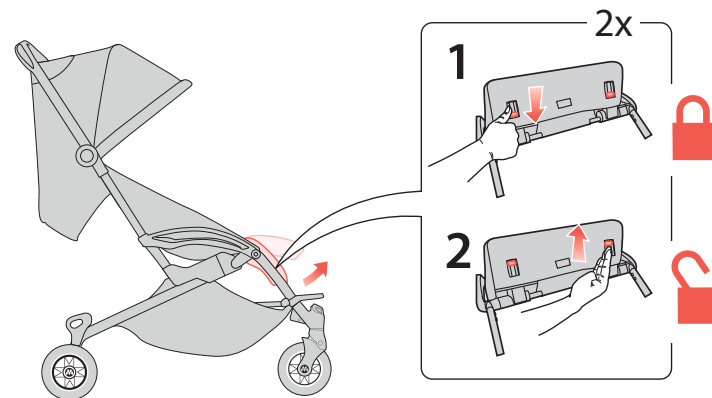




7 ADJUSTING THE SEAT RECLINE

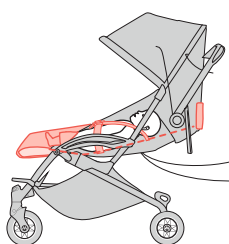
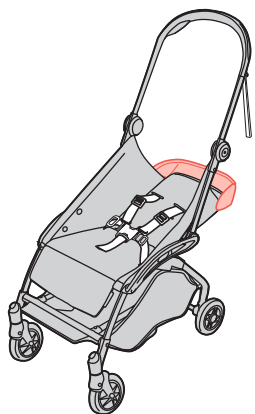


8 LEG REST ADJUSTMENT

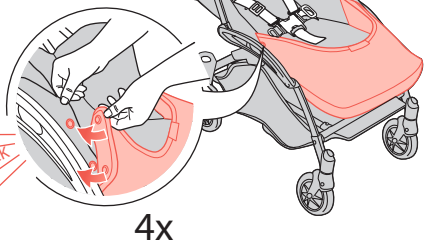
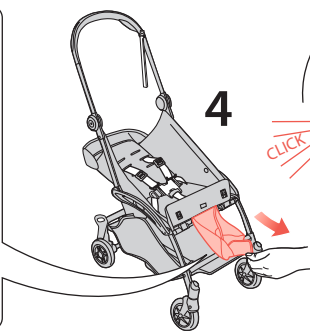
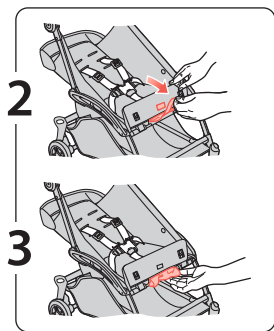
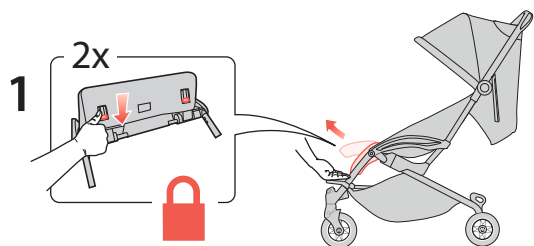
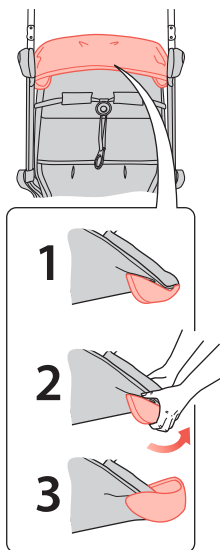
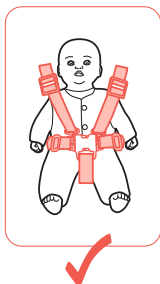


9 FITTING THE HEAD AND FOOT BARRIER

! ①, ②

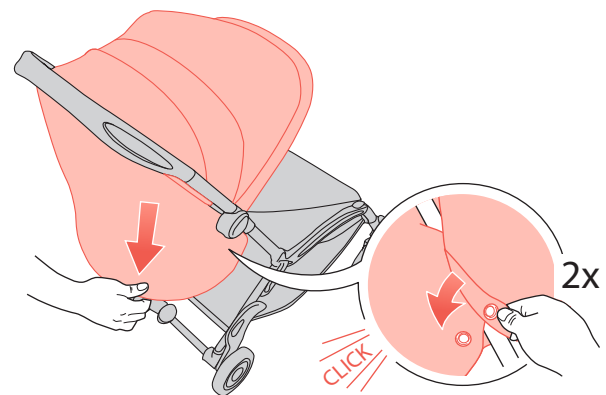
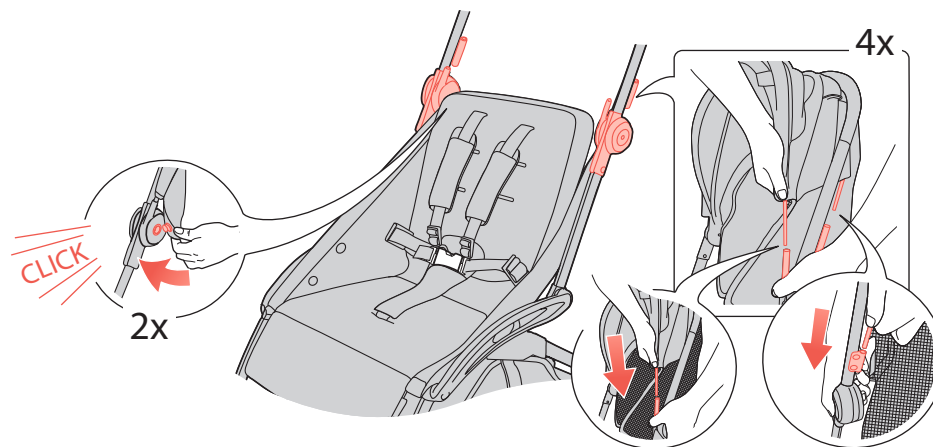
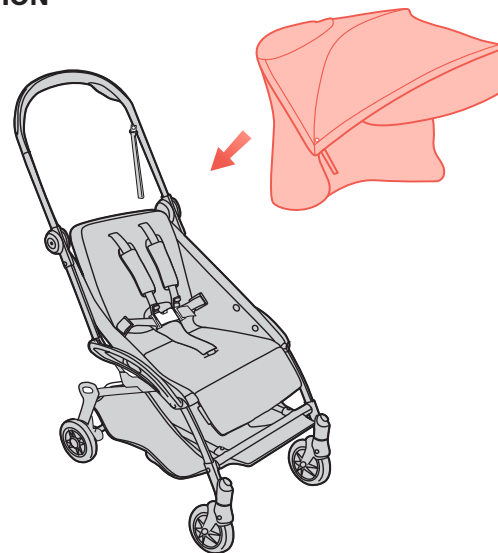


! **0 ~ 6 MONTHS**

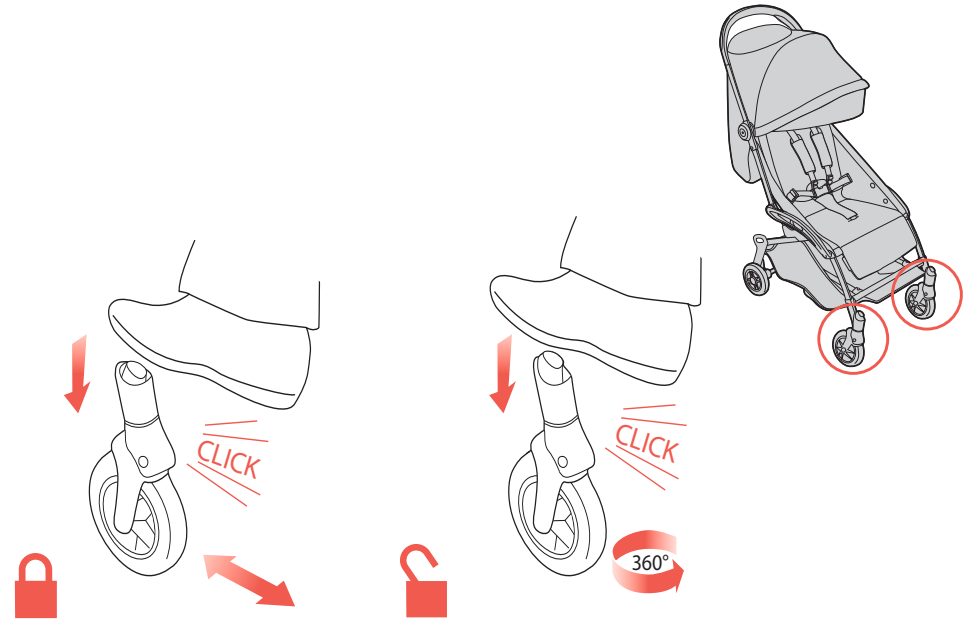


10 HOOD OPERATION

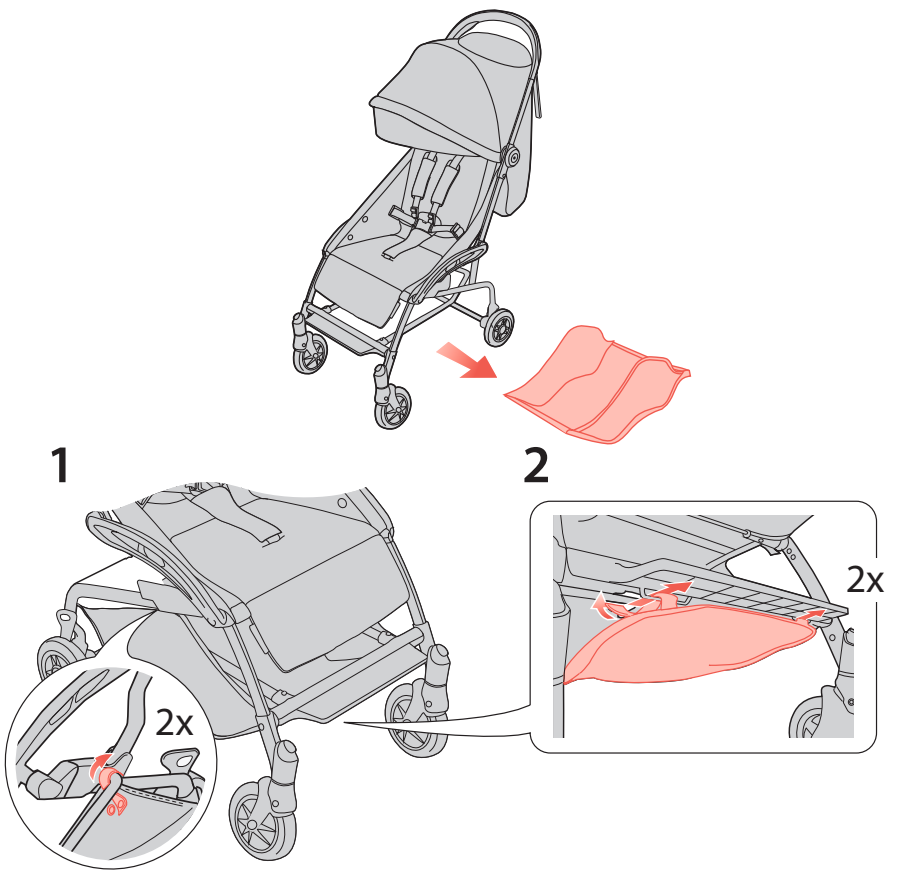
! ⑤



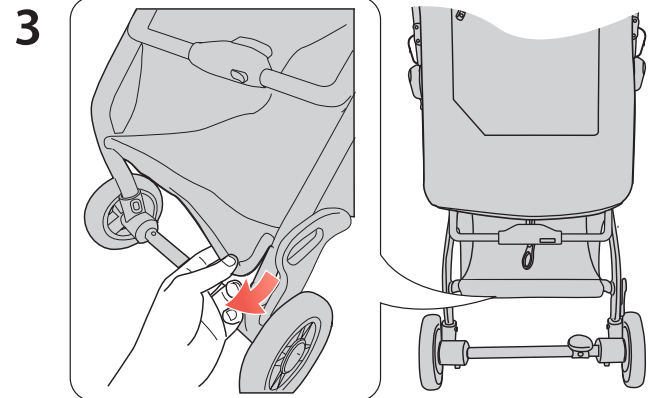
11 FRONT WHEEL SWIVEL LOCKS



13 SHOPPING BASKET

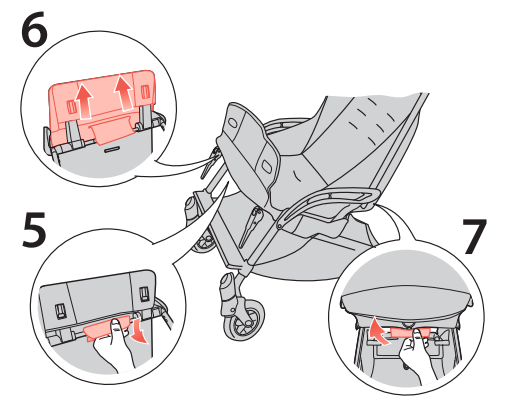
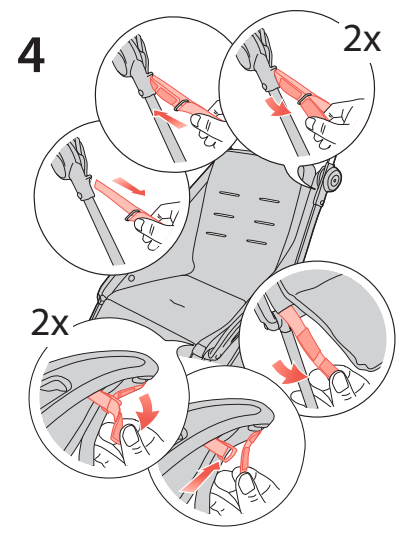
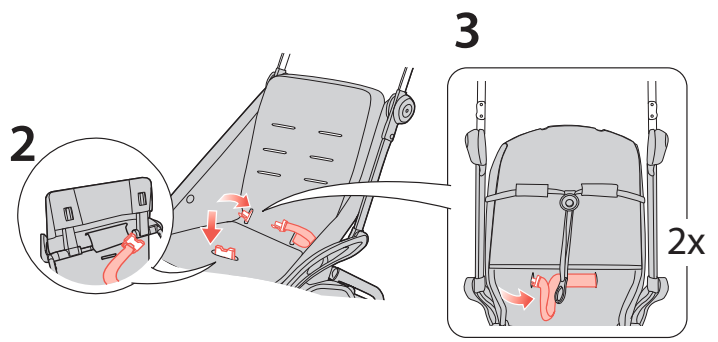
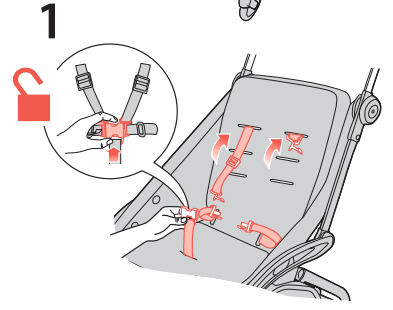
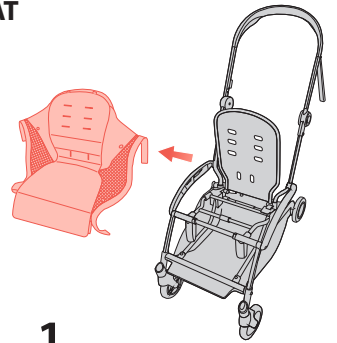
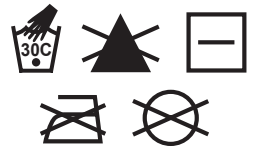


12 FITTING THE TETHER STRAP

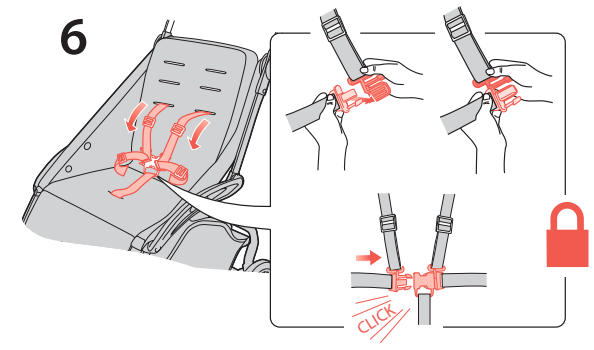
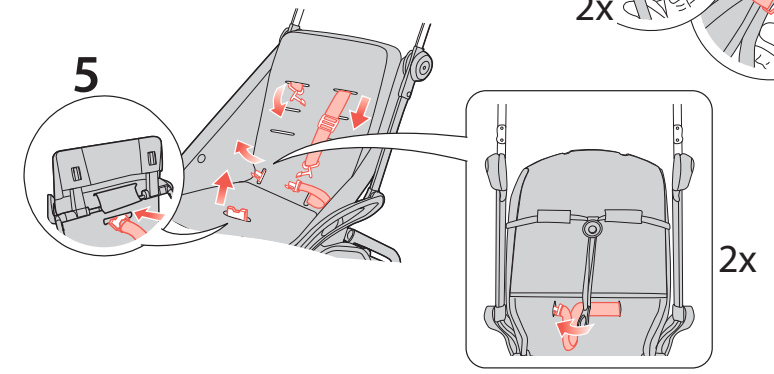
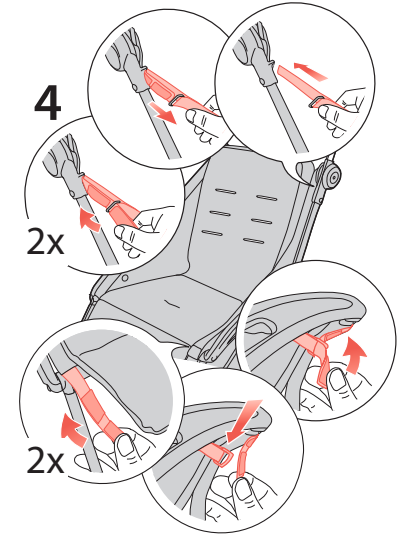
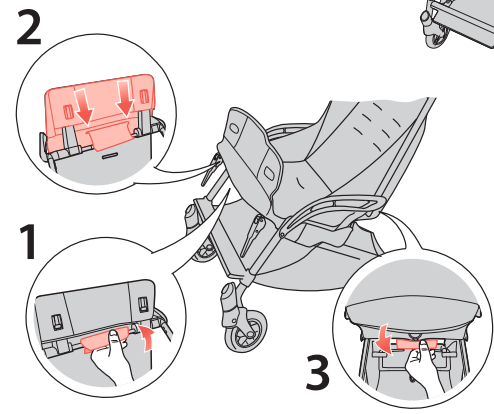
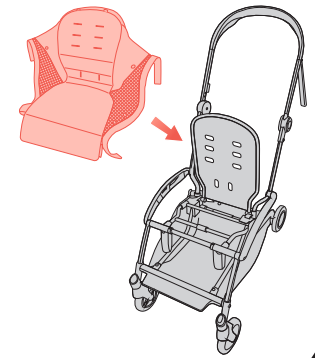


14 REMOVING THE SEAT

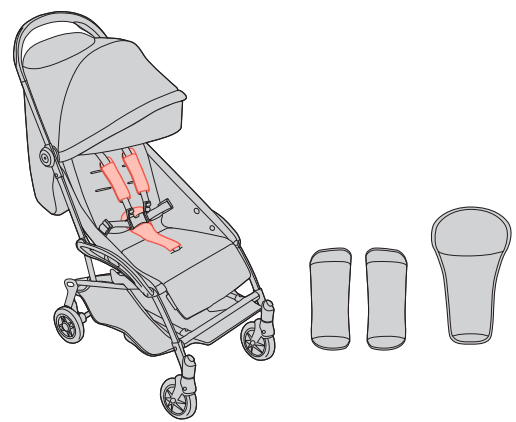
⚠ ⑥



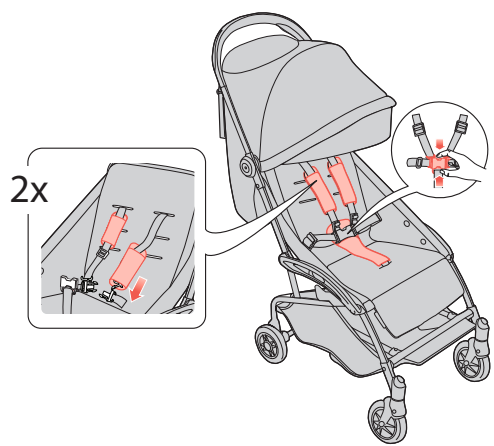
15 REFITTING THE SEAT



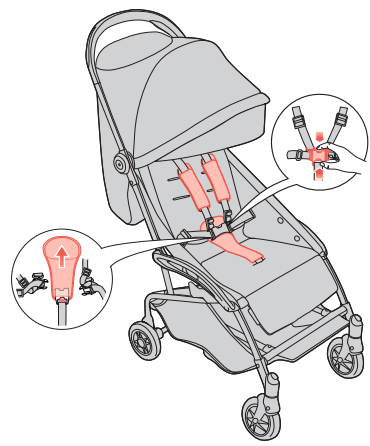
16 FITTING THE JOCKEY STRAP AND HARNESS PADS



2



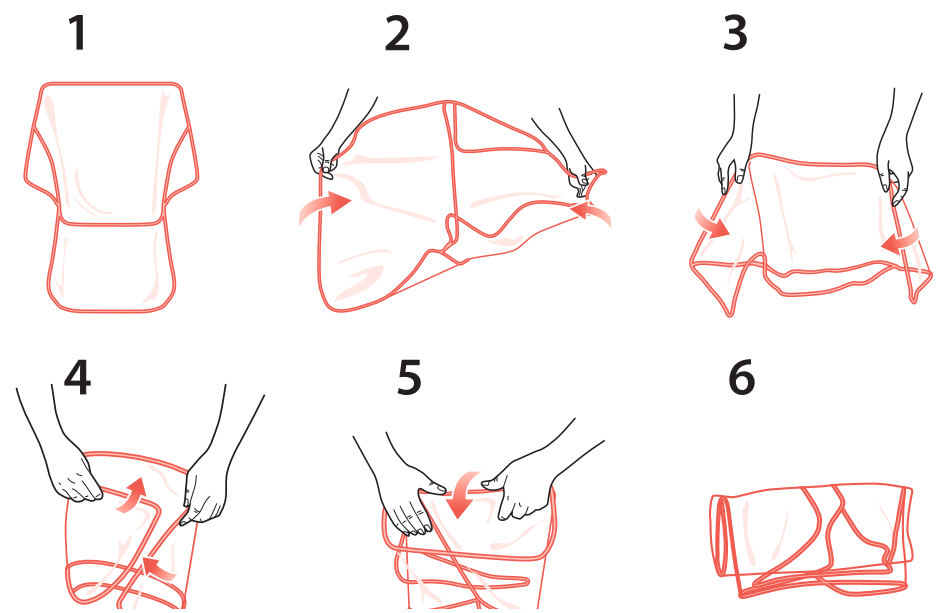
1



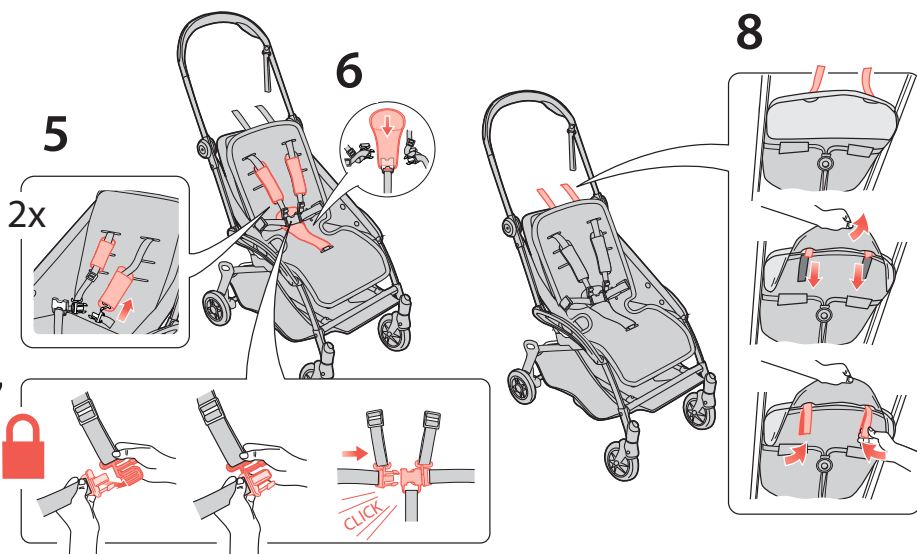
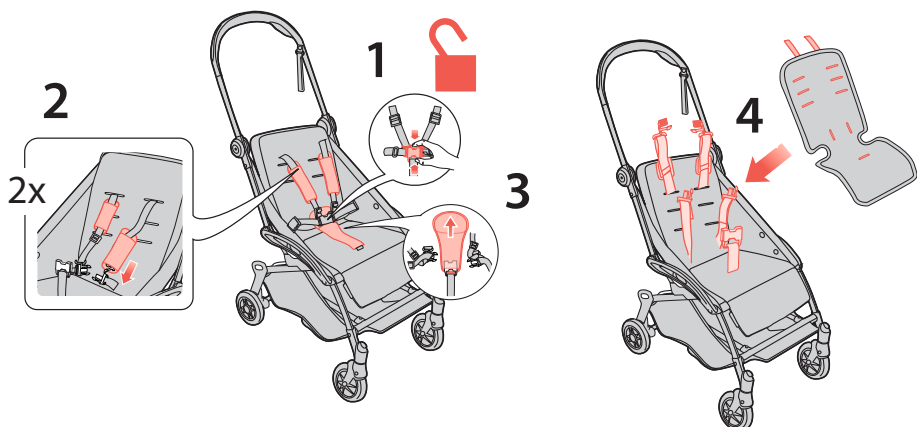
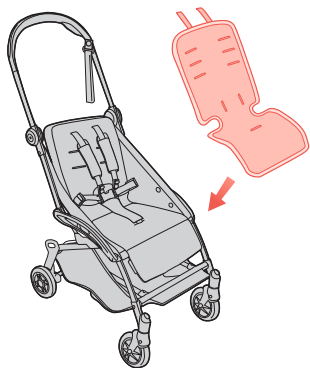
17 FITTING THE RAINCOVER



18 FOLDING THE RAINCOVER



19 FITTING THE LINER



This symbol links the warnings with the illustrations as they must be studied together.

IMPORTANT – READ CAREFULLY AND KEEP FOR FUTURE REFERENCE

WARNING:

- ⑧ Never leave your child unattended.
 - ② Ensure that all the locking devices are engaged before use. Read these instructions carefully before use and keep them for future reference.
 - ③ To avoid injury ensure that your child is kept away when unfolding and folding this product.
 - ⑩ Do not let your child play with this product. This vehicle is intended for use by one child only.
 - ① Always use the restraint system.
 - ⑪ Check that the pram body or seat unit or car seat attachment devices are correctly engaged before use.
 - ⑭ This product is not suitable for running or skating.
 - ① Avoid serious injury from falling or sliding out. Always use seat harness. Child may slip into leg openings and strangle. Never use in reclined carriage position unless the head and foot barriers are securely attached.
- WARNING: TO AVOID INJURY OR DEATH: FOLLOW THE MANUFACTURER'S INSTRUCTIONS.**
- ④ PUT ON ALL THE BRAKES WHENEVER YOU PARK THE STROLLER.
 - ④ ALWAYS APPLY THE BRAKES WHENEVER THE STROLLER IS STATIONARY.
 - ⑧ DO NOT LEAVE CHILDREN UNATTENDED.
 - ① SECURE THE CHILD IN THE HARNESS AT ALL TIMES. DO NOT CARRY EXTRA CHILDREN OR BAGS ON THIS STROLLER.
 - ⑤ MAKE SURE CHILDREN ARE CLEAR OF ANY MOVING PARTS IF YOU ADJUST THE STROLLER, OTHERWISE THEY MAY BE INJURED.
 - ① USE THIS HARNESS AT ALL TIMES. NEVER LEAVE THE HARNESS BUCKLED WHEN NOT FITTED TO A CHILD IN THE STROLLER. HARNESS CAN FORM LOOPS WHICH MAY POSE A STRANGULATION HAZARD. USE TETHER STRAP TO STOP THE STROLLER FROM ROLLING AWAY
- ③ **IMPORTANT-DANGER:** It is important that great care is taken to ensure that children are kept well clear of the stroller when folding or unfolding the product. Finger traps and scissoring actions are unavoidable during these operations. When folding, take care not to trap the child's fingers and fold away all loose material.
 - ⑥ It is important for your child's safety that the harness be correctly fitted and adjusted (especially after replacement for washing purposes). If not adjusted correctly in accordance with the instructions the safety of your child and stability of the stroller will be impaired.
- IMPORTANT**
- This vehicle is intended for child from Zero (0) months and up to 25 kg or 4 years, whichever comes first.
 - ④ The parking device shall be engaged when placing and removing the children. Any load attached to the handle and/or on the back of the

backrest and/or on the sides of the vehicle will affect the stability of the vehicle.

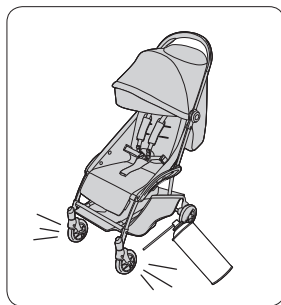
- CAUTION: Overloading the shopping basket may cause a hazardous unstable condition to exist. Maximum load 2 kg (4.4 lb) evenly distributed. Maximum carrying capacity of each hood pouch (where provided) is 0.5 kg (1.1 lb). Parcels or accessory items, or both, placed on the unit may cause the unit to become unstable.
- ⑫ • The stroller may be folded with the shopping basket still attached but all contents must be removed. Failure to do this could damage stroller and contents of shopping basket. Do not carry additional children (either on or by the use of "stroller boards") on this stroller except as permitted in the user instructions. Do not place items on the top of the hood
- ⑬ • Accessories which are not approved by the manufacturer shall not be used. Only replacement parts supplied or recommended by the manufacturer/distributor shall be used. Any damage caused by the use of accessories not recommended will not be covered by the terms of our warranty.
- ① • Always use the crotch strap in combination with the waist and shoulder straps correctly adjusted for your child. The harness and seat belt are not a substitute for proper adult supervision.
- ⑨ • This product is not intended for prolonged periods of sleeping. This vehicle does not replace a cot or a bed. Should your child need to sleep, then it should be placed in a suitable pram body, cot or bed.
- Follow all instructions carefully. Incorrect use will cause damage to stroller.
- Maclaren recommends the most reclined position for new born babies.
- ⑦ • Raincover to be used under adult supervision
- ⑦ • The stability of the stroller will be impaired in high winds with the rain cover fitted, and must be steadied by a responsible adult at all times. Always use the tether strap, especially when on a slope. Raincover must be removed when indoors and in hot weather to prevent overheating and possible risk of suffocation. Always dry rain cover thoroughly before storing. Do not leave the stroller exposed to heat e.g. by an open fire, exposed flame, radiator or in direct sunlight.
- ⑮ • Never leave child in the stroller when ascending or descending stairs or escalators or when travelling on other forms of transport.
- ⑫ • The stroller should always open and fold easily. Do not force it. It may be necessary to re-read the instructions.
- ⑮ • **TIPPING HAZARD:** This vehicle is designed for use on flat or gently sloping surfaces and may be unstable on higher sloping and uneven surfaces.
- Never allow children to stand on the footrest.

CARE & MAINTENANCE

For AU/NZ products only–Australian Safety Testing Standard AS/NZS 2088 with amendment to the Consumer Protection Notice No. 8 of 2007 - maximum weight of 25kg. Maclaren reserve the right to make design changes to any of their products as part of their continuous development programme.



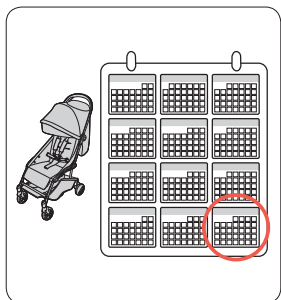
DO NOT REPAIR YOURSELF



ONLY USE SILICONE LUBRICANTS



CONTACT MACLAREN FOR SERVICE



PERIODIC SERVICE REQUIRED

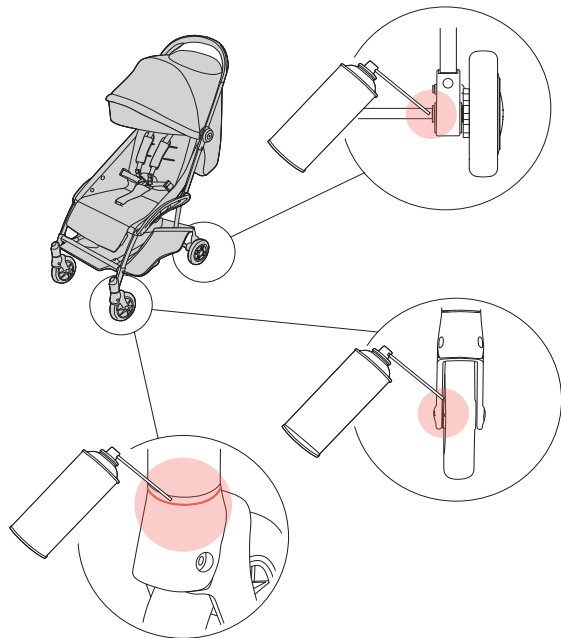


DO NOT USE IF BROKEN OR DAMAGED



NON-MACLAREN ACCESSORIES VOID WARRANTY

ONLY USE SILICONE LUBRICANTS



CARE & MAINTENANCE

- It is the responsibility of the individual consumer purchaser to assure that all functional parts are installed properly, and subsequent normal maintenance services and adjustments necessary to keep the stroller in good operating condition are properly made.
- Your stroller should be periodically checked for indication of potential problems. These are important safety checks for your child's safety and may prevent a shortened product lifecycle, accidents, or harm to your child:
 - Check all rivets and connecting devices for tightness and security.
 - Inspect all parking devices, wheels and tyres and replace or repair if necessary.
 - Check all safety devices for correct operation, in particular the primary and secondary locks. These should be free to move at all times.
- Do not continue to use your stroller if in doubt or you feel it is unsafe.
- We recommend a service every 12 months.
- If wheels squeak, lubricate sparingly with silicone lubricant. Do NOT use oil or grease based products, as this will attract dirt, which will clog the movement.

- To maintain your stroller's performance, purchase replaceable parts on maclarenbaby.com.
- Only Maclaren replacement parts should be used. It is unsafe to use parts not supplied by Maclaren.
- Accessories which are not approved by Maclaren may not be used and will void warranty.

CLEANING

- Clean frame with a damp cloth and a mild detergent, do not use abrasives and dry thoroughly.
- If the stroller chassis parts have been exposed to salt water we recommend that they be rinsed down with fresh (tap) water as soon as possible afterwards.
- The hood may be sponged lightly using a damp cloth and a mild detergent.
- The seat cover may be washed – see care labels for details and dry thoroughly before reuse.
- Do not fold or store the product while wet and never store in a damp environment as this can cause mildew to form.

Australian Warranty Conditions

- 1.1 Our goods come with guarantees that cannot be excluded under the Australian Consumer Law. You are entitled to a replacement or refund for a major failure and compensation for any other reasonably foreseeable loss or damage. You are also entitled to have the goods repaired or replaced if goods fail to be of acceptable quality and the failure does not amount to a major failure.
- 1.2 In addition to the guarantees that cannot be excluded under the Australian Consumer Law described in clause 1.1 and any other guarantee or warranty implied by law, when you purchase one of our products, you will also have the peace of mind in knowing that your product is covered by CNP Brands Standard Warranty. The Standard Warranty is provided by C.O. White Pty Ltd trading as CNP Brands (ABN 97 004 169 233) ("CNP Brands"). The terms and conditions of the Standard Warranty are further described below.
- 1.3 Subject to clause 1.1 and the terms below, CNP Brands warrants that this CNP Brand product, purchased by you in Australia or New Zealand:
 - a) Is free from defects in workmanship and material, when the product is used for normal consumer use for a period of 12 months from the date of purchase as evidenced by your proof of purchase ("Warranty Term"); and
 - b) Will, when the product is used for normal consumer use, comply with the manufacturer's specifications during the Warranty Term.
- 1.4 CNP Brands agrees to repair or replace at CNP Brands cost, the product, and any accessory supplied with the product, which is proven upon inspection by CNP Brands or a CNP Brands Authorised Service Agent not to comply with either warranty contained in clause 1.3. Any decision to repair or replace a product is to be made by CNP in its absolute discretion. The extent of any repair will be to rectify any defect in workmanship and materials or to ensure that the product complies with the manufacturer's specifications.
- 1.5 To make a claim under this Standard Warranty you will need to:
 - a) Return the product within the Warranty Term to the place of purchase together with your proof of purchase, where the retailer will provide you with assistance to make your claim; or
 - b) Contact CNP Brands Customer Care Centre on toll free 1300 667 137 during the Warranty Term to register your claim and provide the details to enable CNP Brands to assess the claim.
- 1.6 You may also be required to make the product available to CNP Brands or a CNP Brands Authorised Service Agent. If you are required to return the product to a CNP Brands Authorised Service Agent, CNP Brands will provide details of the centre closest to you. Unless CNP Brands decides otherwise you are responsible for any costs associated with returning the product to CNP Brands. The product will be at your risk whilst in transit to and from the CNP Brands or CNP Brands Authorised Service Agent, unless transported by CNP Brands or its agents.
- 1.7 In order for your claim to be processed you will need to provide to CNP Brands with an original proof of purchase. For example an original retailer purchase receipt, bill of sale, invoice, lay-by docket, credit card receipt or similar proof of purchase.

1.8 If CNP Brands decide to repair a product, this product may be replaced by refurbished products of the same type rather than being repaired. Refurbished parts may be used to repair the product. Replacement of the product or a part does not extend or restart the Warranty Term.

1.9 Exclusions

- a) This Standard Warranty does not cover products purchased as an ex-display, without being checked by CNP Brands or CNP Brands Authorised Service Agents.
- b) This Standard Warranty does not cover faults or defects caused by:
 - i. Unsuitable, improper use or use not in accordance with the manufactures specifications;
 - ii. Incorrect installation or installation not in accordance with instructions provided;
 - iii. Normal wear and tear;
 - iv. Inadequate or complete lack of maintenance;
 - v. Chemical, electrochemical or electrical influences; or
 - vi. Harsh detergents or abrasive cleaners used on product finishes.
- c) To the fullest extent permitted by law, CNP Brands excludes all liability for damage or injury to any person, damage to any property, and any indirect consequential or other loss or damage.

To contact CNP Brands or, to find the nearest CNP Brands Authorised Service Agent, please contact CNP Brands on 1300 667 137, email info@cnpbrands.com.au or write to CNP Brands, P.O Box 8 Deer Park Victoria 3023 Australia. Please also refer to our website www.cnpbrands.com.au.

This page is intentionally left blank.

This page is intentionally left blank.

IMPORTANT KEEP FOR FUTURE REFERENCE



Maclaren

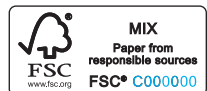
Station Works, Long Buckby
Northants, NN6 7PF U.K.

P.O. Box 1409, Norwalk, CT 06856-1409
U.S.A.



maclarenbaby.com

The words **MACLAREN®** and **MACLAREN atom™**, and associated logos are trade marks. © Maclaren All Rights Reserved.
MS15287 From Birth Stroller 1115 IM GLB ML



PRINTED WITH  **SOY INK™**