

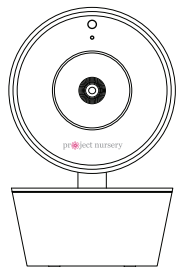
# project nursery®

## Accessory Camera

### Quick Start Guide

PNMC01 QSG 01

#### 1 Unpack

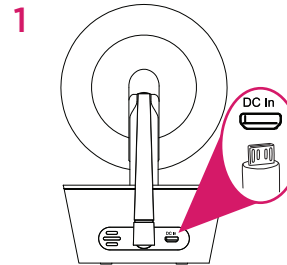


Wireless camera

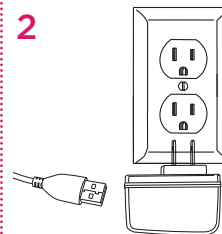
- (1) 10-foot charging cable
- (1) power adapter

#### 2 Pair the camera with your monitor(s)

Before you start pairing the monitors with your camera, bring the camera into the same room so that you have it handy. You can put it in the baby's room once you've finished pairing.



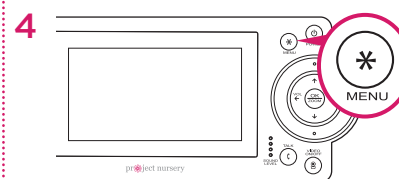
Plug one end of the charging cable into the **DC In** jack on the back of the camera.



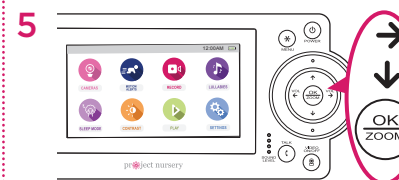
Plug the other end into the single charging adapter. Then plug the adapter into an outlet or surge protector.

The camera turns on automatically when it's plugged in (the indicator light on the base below the camera lens turns blue).

3 Make sure the monitor you want to pair this camera with is turned on. If it isn't press its **POWER** button to turn it on.



Press the **MENU** button on the monitor. The menu appears on screen.



Use the arrows to highlight **CAMERAS**. Press **OK/ZOOM** to select it. The Cameras menu appears on screen.

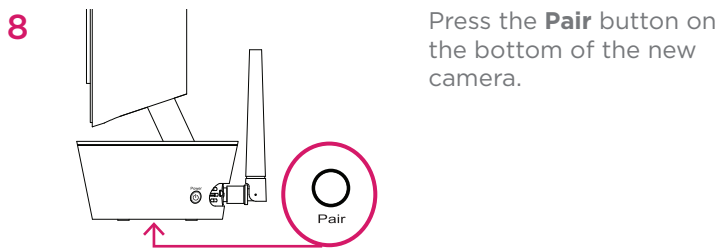
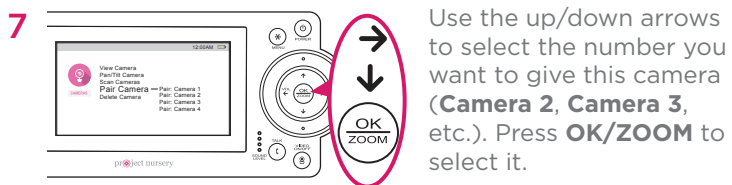
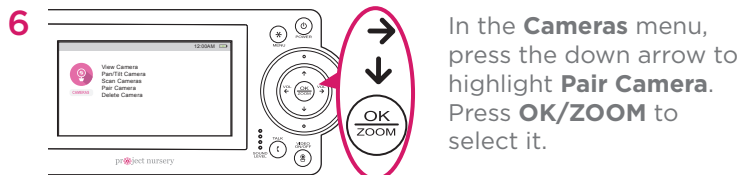
Check out our setup videos

On your computer, go to [ProjectNursery.com/Electronics](http://ProjectNursery.com/Electronics) or scan the QR code here.



*Continues on back...*

## 2 Pair the camera with your monitor(s) (continued)



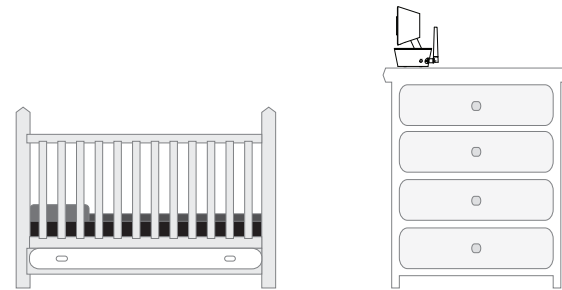
9 If the monitor screen says “**Pair OK**,” you’re all set to use the monitor and the camera!

If the monitor screen says “**Pair Fail**,” put the camera closer to the monitor and try again.)

**IMPORTANT:** If you have a mini monitor, repeat the camera pairing process with it as well.

## 3 Position the camera

Place the camera on a flat surface, like a dresser or shelf, or mount the camera to a wall using the keyhole slots on its bottom. Then plug it in using the charging cable and power adapter.



**IMPORTANT:** NEVER place the camera(s) or cords of any kind inside the crib. NEVER place the camera(s) or cords within reach of the baby. They should be at least 3 feet away.

### WARNING

**Strangulation Hazard: Children have STRANGLING in cords. Keep this cord out of the reach of children (more than 3ft (1m) away). Never use extension cords with AC Adapters. Only use the AC Adapters provided.**



## Congratulations!

Your new camera is ready to use with your system!

For information on how to use your new camera with the system, see the owner’s manual that came with the system.

## Questions?

Just call 1-844-393-7338 or visit  
ProjectNursery.com