



Osmo

Rocking Chair

Model # 094111



**IMPORTANT:
RETAIN FOR FUTURE REFERENCE,
READ CAREFULLY**



Read all instructions before assembly and use of the rocking chair. Keep instructions for future use.

⚠ WARNING ⚠

ADULT ASSEMBLY REQUIRED:

DUE TO THE PRESENCE OF SMALL PARTS DURING ASSEMBLY, KEEP OUT OF REACH OF CHILDREN UNTIL ASSEMBLY IS COMPLETE.

DO NOT SIT ON THE EDGE OF THE SEAT, ARMRESTS OR ON THE BACKREST AS THIS COULD CAUSE THE CHAIR TO TIP OVER.

DO NOT USE THE CHAIR AS A STEP STOOL.

DO NOT LEAVE CHILDREN UNATTENDED ON OR BESIDE THE CHAIR.

Congratulations on your purchase of the **Osmo Rocking Chair**.

This product has been designed and developed with safety, comfort and functionality in mind. Please take the time to read this manual carefully before using this product and keep it in a safe place for future reference.

Contents

Assembly contents list

Assembly / Operating instructions

How to care for your **Osmo Rocking Chair**



Due to variations in the style and design of our products, the photographs and illustrations shown in this instruction manual are generic, therefore product fabrics, colour and design may vary from images shown. CNP Brands reserves the right to alter product specifications without notice as a result of our ongoing policy of product improvement.

Check what you have received...

You have received **1 box**. Please check the contents of the box against the list below. If anything is missing, please contact Customer Service.

In Australia, contact **CNP Brands on 1300 667 137**, in New Zealand contact **Wainhouse Distribution on 0800 567 5000**.

Supplied loose in box:

Chair



x 1

53mm Bolts



x 6

Rocking Legs



x 2

Allen Key



x 1

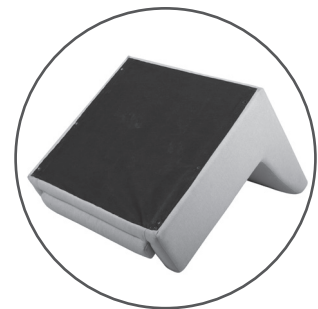
There are no accessories recommended for use with this Childcare Rocking Chair.

- a. As small parts are involved in assembly, children should be kept clear of the assembly area.
- b. Dispose of all packaging material immediately after the chair and rocker is assembled.
- c. Identify all parts and components.
- d. Two people are recommended for assembly of the chair.
Spread a sheet on the floor during assembly time to protect the chair.

To assemble Chair Legs...

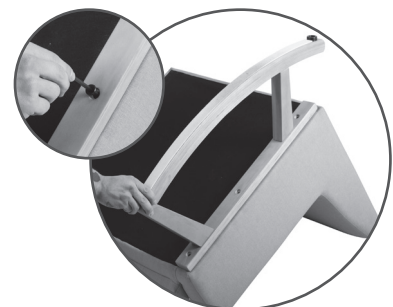
1

- 1a. Lay **Chair** face down on a flat surface.



2

- 2a. Align **Rocking Leg** with pre-drilled holes on **Chair** base. **Ensure** rocking stoppers are facing rear of **Chair**.
- 2b. Insert 3 x **53mm Bolts** and tighten to secure.
- 2c. Repeat for remaining rocking leg.



⚠ WARNING ⚠

DO NOT over-tighten bolts.

3

- 3a. Stand chair upright.



The rocking chair is now ready for use.

Cleaning

This product has been designed and developed with safety, comfort and functionality in mind. Please take the time to read this manual carefully before using this product and keep it in a safe place for future reference.

To ensure the long-lasting use of your rocking chair, vacuum regularly using low suction, remove all liquid and food spills immediately, wipe down with a damp cloth and use a mild soap solution if necessary. Do not use abrasive cleaners. Do not wet excessively. Dry in shade away from direct heat and sunlight. Always store product in a clean dry place.

Maintenance

Always check parts regularly for tightness of screws, nuts and other fasteners – tighten or replace if required. To maintain the safety of your glider rocking chair, seek prompt repairs for bent, torn, worn or broken parts. Use only those parts and accessories approved by **CNP Brands**.

If you have any difficulties in assembling the glider rocking chair & ottoman, please contact our Service Department.

In Australia, contact **CNP Brands on 1300 667 137**, in New Zealand contact **Wainhouse Distribution on 0800 567 5000**.



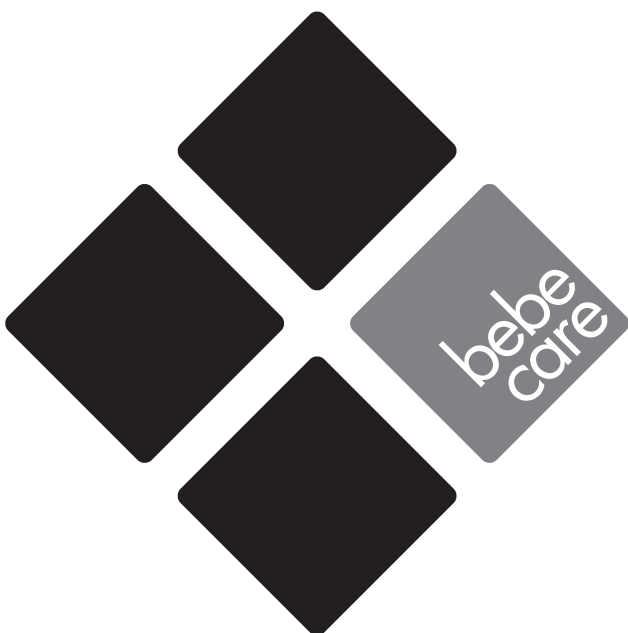
CNP BRANDS

CHILDCARE NURSERY PRODUCTS | EST. 1899

About CNP Brands

Currently, **CNP Brands** boasts one of the most diverse brand portfolios with a combination of company owned brands and distribution agreements. These include distribution lines for **Evenflo, Good Baby, Lascal, Maclaren, Project Nursery, Summer Infant and Yookidoo.**

Our own brands, including **Childcare**, have gone from strength to strength in recent years. **Childcare**, and our premium brand **bebe care**, demonstrate our commitment to quality and continuing investment in product development.





CNP BRANDS

CHILDCARE NURSERY PRODUCTS | EST. 1899



Distributed in Australia by CNP Brands
Customer Service 1300 667 137

W: www.cnpbrands.com.au
E: info@cnpbrands.com.au
F: www.facebook.com/CNPBrands
I: @cnp_baby

Distributed in New Zealand by Wainhouse
Distribution
2-6 Argyle St, Morningside,
PO Box 41-014,
St Lukes, Auckland, New Zealand
Customer Service: 0800 567 5000

E: helpline@wainhousedist.co.nz

